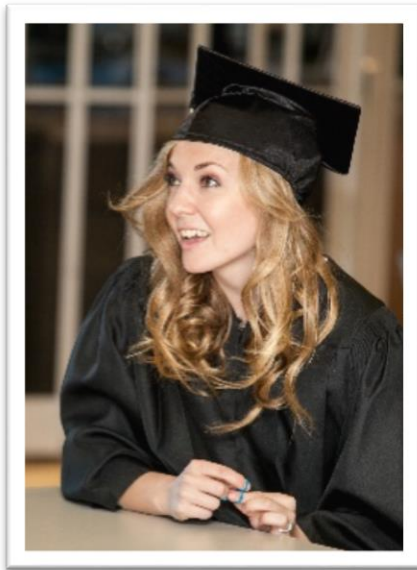


The Director of Programs is the Senior Academic Officer for the college and will provide leadership in formulating program plans and developing and maintaining quality assurance systems. The primary work objective is to create a climate that is conducive to teaching, learning and meeting the needs of students.

GREAT PLAINS COLLEGE



At the forefront of Saskatchewan’s regional college system, Great Plains College is committed to developing individuals and preparing highly-skilled employees for the labour market in western Saskatchewan. We believe that students are empowered to achieve economic prosperity and quality of life through education and training.

We continually strive to connect students, communities and businesses through responsive programming in a flexible, supportive and student-centered learning environment.

We focus our energy and innovation on building careers, partnerships and communities. Last year, 75 per cent of Great Plains College graduates had secured full-time employment within 60-90 days of graduating and completing their program. This success extends beyond regional boundaries. According to a 2017 study conducted by Praxis Research, college students, graduates and the operations of Saskatchewan regional colleges contributed 4,008 jobs and 461.6 million in provincial gross domestic product—including \$198.8 million in

new wages and salaries—to the Saskatchewan economy in 2016-17.

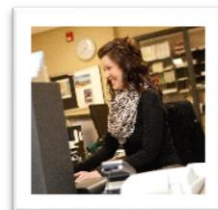
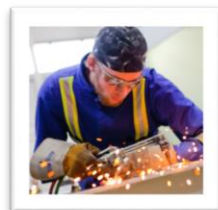
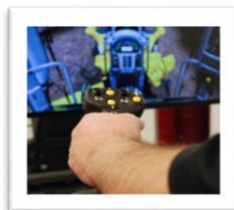
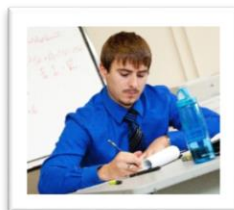
Saskatchewan regional colleges provide learners with an opportunity to access post-secondary education and training close to home and often in their own community.

The college offers a wide variety of programming. Post-secondary options include certificates, diplomas and university programs along with a Master of Business Administration in Community Economic Development. We are the trusted partner for industry Skills Training and Professional Development courses and offer a high-quality selection of Adult Basic Education and English Language Training services through the region.

In addition to a diverse range of programs, we proudly boast a strong Entrance Scholarship program that helps improve the accessibility and affordability of post-secondary education.

“WHY” Great Plains College

- Supportive and team-orientated working environment
- The leadership is professional and purposeful
- It is rewarding to see the students’ high success and advancement
- The education students receive is directly linked to employability within the region.
- The college offers and supports a strong varsity athletics program
- The college offers a respectful and fun working and learning environment



GREAT PLAINS COLLEGE LOCATIONS



The Great Plains College region includes more than 100,000 square kilometers, which spans the southwest corner of the province.

Regional campuses are located in Kindersley, Swift Current and Warman. Additional programming is offered at centres in Biggar, Maple Creek, Rosetown and Whitecap Dakota First Nation.

Throughout these locations, approximately 4,400 full-time, part-time and casual students are served annually.

This executive leadership position reflects the size and scale of the operation and requires comfort working in a decentralized environment.

Swift Current

Swift Current is a thriving city of 18,000 citizens and is the main urban centre for Southwest Saskatchewan. The city celebrates a vibrant downtown business core, shopping malls and a full range of education and health services. It is the regional hub of cultural, social, artistic, sport and recreation amenities.

[Visit Swift Current](#)



Kindersley

Kindersley is a young and vibrant community of more than 5,000 citizens. It is the heart of West Central Saskatchewan's agriculture and oil and gas industries. The community offers a small-town atmosphere and community vitality along with a variety of retail, service, cultural and recreational amenities.

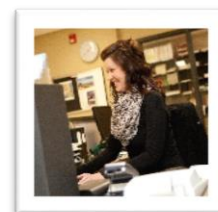
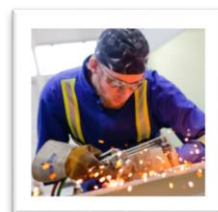
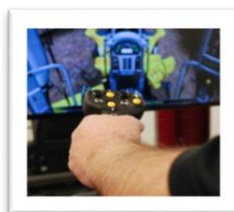
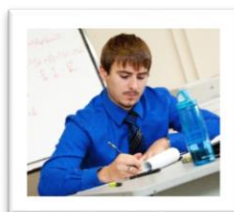
[Visit Kindersley](#)



Warman

The City of Warman is the fastest growing small city in Saskatchewan. Located less than 15 minutes from the downtown core of Saskatoon, it is home to more than 10,000 residents. The city is constantly evolving to meet the needs of a young and active population. There is a premier golf course along with a robust selection of parks, playgrounds and facilities, to foster a healthy and affordable living.

[Visit Warman](#)



ADDITIONAL LINKS:

- **Great Plains College**
 - Publications – greatplainscollege.ca/publications
 - Great Plains College Strategic Plan 2016 – 2019
 - Great Plains College Economic Impact
 - Annual Reports
 - Business Plans
 - Program Guide
 - Management – greatplainscollege.ca/management-board-of-governors
 - Programs and courses – greatplainscollege.ca/programs-courses/

