



**Be** here.

**Welcome to  
Great Plains College.**

**2020-21 VIEWBOOK**

*great plains*  
college



“

**Great Plains College  
allowed me to continue  
my education and  
my passion for sports  
at the same time. I  
like the smaller class  
sizes as it created  
a very personal  
and interactive  
environment.”**

---

**– Tess Vandersteen**

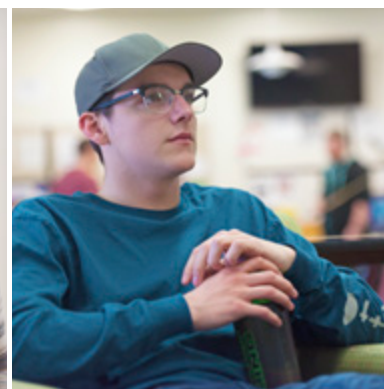
2019 Practical Nursing  
& SunDogs Alumna





**I came to the college for my first year of university—I received a scholarship, got to play volleyball with the SunDogs and stick with my friends.”**

**– Wyatt Wiebe**  
2017 University & SunDog Alumnus



### STUDENT ASSOCIATIONS

Our Student Associations organize student events, provide leadership opportunities and promote good times.

### SUNDOGS ATHLETICS

The SunDogs Athletics program is a big draw at Swift Current Campus. The SunDogs compete in men's and women's volleyball in the Prairie Athletic Conference.

### SCHOLARSHIPS

If you're looking for something to do outside the college, you'll probably be able to afford that too, thanks to our one-of-a-kind Entrance Scholarships and Early Entrance Awards.

### HEALTH & DENTAL PLAN

If you are enrolled in a full-time student loan-eligible program, we've got you covered under a robust health and dental plan.

### MYWELLNESS

Take the first step toward better mental health. myWellness is an award-winning student mental health and wellness program through which you can access support resources, an anonymous mental health assessment and a toolbox full of helpful solutions.

### CHECK US OUT

Attend a Spend-A-Day or Open House, book a tour or apply and come see it for yourself. There's no shortage of information at [greatplainscollege.ca](http://greatplainscollege.ca).

## Table of Contents

04	Spend-A-Day	44	Scholarships & Awards
08	Programs	46	SunDogs Athletics
32	English Language Training	48	Apply
34	Adult Basic Education	52	Admissions chart
42	Safety Training		



## Explore

---

- Check out a program
- Tour the campus
- Hands-on activities
- Meet the instructors
- Application, scholarship, athletics and career information
- Free lunch and prizes



## Spend-A-Day at Great Plains College

Register at [greatplainscollege.ca/spendaday](https://greatplainscollege.ca/spendaday).

### November 18, 2019 - Biggar Program Centre

Join us in Biggar to learn about the Continuing Care Assistant, Electrician or Practical Nursing program.

### November 21, 2019 - Swift Current Campus

Spend time in the Administrative Assistant, Business, Electrician, Power Engineering, Practical Nursing, University or Welding program.

## Join us at an Open House

Visit [greatplainscollege.ca/oh](https://greatplainscollege.ca/oh) for more information.

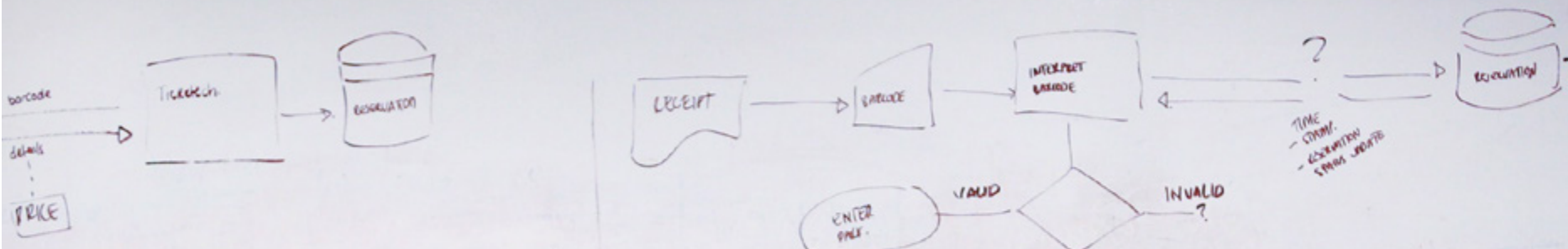
Meet with student advisers and program coordinators to find out more about the programs that interest you. Refreshments, tours and information on scholarships, financial aid and the application process will be available.

### October 9, 2019 - Swift Current Campus University Night

*Includes information on University of Regina and University of Saskatchewan courses available at Great Plains College.*

### November 5, 2019 - Kindersley Campus

### January 15, 2020 - Swift Current Campus



## Our smaller class sizes

make for a more personal, supportive and productive learning environment. In most programs, you gain real-world experience through practicums before you graduate.

# Our Programs

We offer a number of post-secondary certificate, diploma and degree programs as well as university courses, safety training, Adult Basic Education and English language training.





## Administrative Assistant

Full-time | Part-time



### WORK TO COMPLETE THIS PROGRAM AT YOUR OWN PACE.

Full-time and part-time course loads are available. You will receive practical and applied training in word processing, accounting, spreadsheets, database and internet searches, office procedures, communications and business calculations.

---

**CLASSES START:** September, November, January or March

---

**LOCATIONS:** Kindersley, Swift Current, Warman

---

**AFTER GPC:** Work as an administrative assistant, data entry officer or general office clerk.

---



## Business

Full-time | Part-time



### GET YOUR CAREER IN BUSINESS STARTED OR BRING YOUR BUSINESS IDEAS TO LIFE WITH THE TOOLSET NEEDED TO START YOUR OWN BUSINESS.

If your goal is to pursue a professional career or continue your education, this program transfers directly to a diploma at Great Plains College or Saskatchewan Polytechnic. You can also apply credits toward a university degree.

---

**LOCATIONS:** Swift Current, Warman

---

**AFTER GPC:** Work in banking, human resources, investment or real estate. Start your own business. Choose an area of specialization, continue your education and complete a Business diploma or degree. Continue at Great Plains College with a diploma in Accounting, Human Resources or Management at Swift Current Campus, or a diploma in Management at Warman Campus.

---



## Certificate in Health, Safety & Environmental Processes

Full-time | Part-time



### BEGIN A CAREER IN OCCUPATIONAL HEALTH AND SAFETY (OH&S).

Develop your ability to identify, prioritize and manage workplace risks. This certificate prepares you for a leadership role by providing you with advanced process and critical thinking skills. The range of skills and knowledge taught in this program will effectively equip OH&S practitioners with necessary and relevant competencies.

**CLASSES START:** Whenever the time is right for you.

**LOCATION:** Online

**AFTER GPC:** Advance your career in industries such as mining, construction, health care, OH&S consulting or inspecting. Prepare for the Canadian Registered Safety Professionals (CRSP) designation exam. Continue to complete a diploma in the field and/or pursue a related degree and MBA online.



## Continuing Care Assistant

Full-time | Part-time



### LEARN TO FUNCTION AS A TEAM MEMBER IN HOME AND SPECIAL CARE.

Through a combination of hands-on classroom learning and labs, you will receive clinical experience in home and long-term care settings. This program focuses on working with the elderly, but you will be prepared to work with clients of all ages.

**LOCATIONS:** Biggar, Kindersley, Swift Current

**AFTER GPC:** Enjoy a high employment rate and begin a career as part of a health-care team. You might work in a home care setting, long-term care facility, private care home, acute care facility, integrated facility, supportive housing or special needs classroom.



## Early Childhood Education

Part-time



**DEVELOP AN UNDERSTANDING OF CHILDREN'S VARYING PHYSICAL, SOCIAL, COGNITIVE, CREATIVE AND EMOTIONAL DEVELOPMENT STAGES AND LEARN ABOUT THE IMPORTANCE OF PLAY AS A VEHICLE FOR LEARNING.**

As an early childhood educator, you plan and organize activities for preschool and school-aged children. You also lead children in activities to stimulate and develop their intellectual, physical and emotional growth. Work toward your certificate or diploma through the Level 1, 2 and 3 courses.

---

**LOCATIONS:** Swift Current, Warman

---

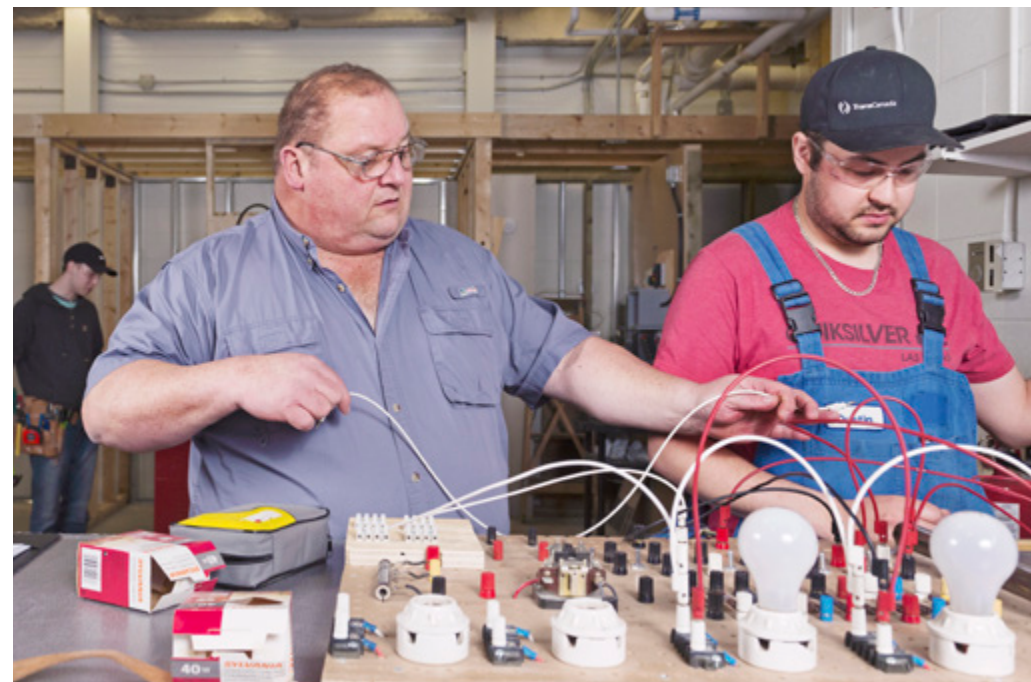
**AFTER GPC:** Work in childcare centres, preschools or private homes. Continue your education and complete the Early Childhood Education diploma at Saskatchewan Polytechnic.

---



## Electrician

Full-time



**THIS APPLIED CERTIFICATE PROGRAM PROVIDES ENTRY-LEVEL SKILLS TRAINING TO HELP FIND EMPLOYMENT IN THE ELECTRICAL TRADE.**

Electricians lay out, assemble, install, test, troubleshoot and repair electrical wiring, fixtures, control devices and related equipment in buildings and structures. Up to 300 hours of trade time and academic credit for Level 1 Apprenticeship may be available to graduates who find employment in the trade and register as apprentices with the Saskatchewan Apprenticeship and Trade Certification Commission (SATCC) within the specified three-year timeline.

---

**LOCATIONS:** Biggar, Swift Current

---

**AFTER GPC:** Work with electrical contractors or in maintenance, manufacturing or mining companies. Continue with apprenticeship and earn your journeypersons.

---



## Heavy Equipment Operator

6 weeks



**THIS SIX-WEEK, INDUSTRY-RECOGNIZED TRAINING WILL PROVIDE POWERED MOBILE EQUIPMENT CERTIFICATION ON TWO PIECES OF HEAVY EQUIPMENT.**

Learn operation techniques for two machines in the controlled environment of a state-of-the-art simulator lab and on an actual work site. You will operate, observe, learn and practice basic skills required to perform construction tasks. Equipment options may include motor grader, excavator, front-end loader and dozer.

---

**LOCATION:** Warman

---

**AFTER GPC:** Begin working with a construction company, heavy equipment contractor, public works department or mining company. Work toward becoming an independent business owner.

---



## Liberal Arts Certificate

Full-time | Part-time



**IN THIS CERTIFICATE PROGRAM, YOU WILL BE INTRODUCED TO A WIDE RANGE OF SUBJECTS AND UNIVERSITY COURSES.**

The completion of this program can function as a standalone certificate or as the first step toward many university degrees. It can also provide you with a competitive edge in finding employment.

---

**LOCATION:** Swift Current

---

**AFTER GPC:** Continue with post-secondary education and apply your credits toward a number of university degrees.

---



## Power Engineering

Full-time



**FOURTH CLASS:** Learn the basic principles of mathematics, mechanics, thermodynamics and various components of boilers such as construction, combustion, design, compression, refrigeration and operations. You will learn through theory and hands-on experience in a lab setting and a work practicum. Be prepared to write the provincial licensing exams.

**THIRD CLASS:** Build on your Fourth Class foundation and expand your knowledge of high and low-pressure boiler operations, water treatment systems, pump operations, air conditioning and refrigeration, monitoring plant operations, plant safety and environmental (pollution) management. Be prepared to write the third class provincial licensing exams.

---

**LOCATIONS:** Kindersley (Third Class only), Swift Current

---

**AFTER GPC:** Work as a power engineer or process operator in plants, large-scale buildings, mills and mines.

---



## Primary Care Paramedic

Part-time



### LEARN THE SKILLS YOU NEED TO PROVIDE MEDICAL CARE DURING AN EMERGENCY AS A PRIMARY CARE PARAMEDIC.

You will train to deliver pre-hospital emergency care under high-pressure situations. The program emphasizes hands-on training, including hospital and ambulance practicums. After you graduate, you will be eligible to write the provincial licensing exam for registration with the Saskatchewan College of Paramedics.

---

**LOCATION:** Swift Current

---

**AFTER GPC:** Work as a primary care paramedic in a variety of fields, including ambulance, air ambulance and fire protection services, in the military, at mine sites or industrial manufacturing, milling and processing sites.

---



## Youth Care Worker

Full-time | Part-time



**LEARN ABOUT THE VARIOUS ASPECTS OF GROWTH AND DEVELOPMENT, INCLUDING HOW TO DEVELOP THERAPEUTIC RELATIONSHIPS WITH YOUTH, THEIR FAMILIES AND OTHER INFORMAL HELPERS.**

Taking place both inside the classroom and in the community, you will enhance your knowledge of youth-centred supports and behavioural intervention strategies, as well as Indigenous awareness and addictions. Practicum placements may be in group homes, community agencies, community schools or residential treatment facilities.

---

**LOCATION:** Warman

---

**AFTER GPC:** Work in outreach programs, community school classrooms, group homes and non-profit organizations. Continue your education and complete the Youth Care Worker diploma through Saskatchewan Polytechnic.

---



## Welding

Full-time



**LEARN ON STATE-OF-THE-ART EQUIPMENT AND ONE-OF-A-KIND PROJECTS IN OUR CANADIAN WELDING BUREAU (CWB) CERTIFIED SHOP.**

You will train in multiple welding processes, operating fabrication equipment, using blueprints, general shop practices and shop safety. Before you graduate, you will have the opportunity to take the CWB test. Your Welding certificate may give you credit for Level 1 and Level 2 apprenticeship training as well as 1,200 hours of trade time credit. You will only need Level 3 training and enough work hours to write the interprovincial journeyman exam—your ticket to working as a journeyman welder anywhere in Canada.

---

**LOCATION:** Swift Current

---

**AFTER GPC:** Work as a self-employed contractor, in a private welding shop or for a manufacturer. Continue with apprenticeship and earn your journeypersons.

---



**Business**

Full-time | Part-time



**ONCE YOU HAVE COMPLETED THE BUSINESS CERTIFICATE, YOU CAN APPLY DIRECTLY TO THE SECOND YEAR OF THE DIPLOMA PROGRAM AND SPECIALIZE IN ACCOUNTING, HUMAN RESOURCES OR MANAGEMENT.**

The second year allows for a flexible schedule through a mixed offering of face-to-face, online and evening classes.

<b>LOCATIONS:</b>	Swift Current, Warman (Management specialty only)
<b>AFTER GPC:</b>	Begin your career in administrative and supervisory jobs in public and privately-owned businesses and organizations. Transfer directly into a Business degree program at the University of Regina or University of Saskatchewan.

**Specialize**

**ACCOUNTANCY**

Focus on accountancy, including cost accounting, auditing, taxation and finance. Learn how to conduct audits, perform business analyses and present financial information in an expert and professional manner.

**HUMAN RESOURCES**

Begin to specialize in Human Resource issues including best management and employment practices, collective bargaining, compensation and benefits, employee relations and development, organizational effectiveness and recruitment.

**MANAGEMENT**

Develop knowledge and skills in management, leadership, decision-making, interpersonal and organizational behaviour, accounting, international business and e-business, entrepreneurship and retail strategy development.



## Diploma in Safety, Health & Environmental Management

Full-time | Part-time



### **GAIN THE KNOWLEDGE REQUIRED TO DEVELOP, IMPLEMENT AND EVALUATE OCCUPATIONAL HEALTH AND SAFETY PROGRAMS AND SYSTEMS IN THE WORKPLACE.**

Demand for competent health and safety practitioners is increasing steadily and forecasted to accelerate in the future. This program augments the skills and knowledge of graduates of our Certificate in Health, Safety and Environmental Process (CHSEP) program or recognized equivalent. Prerequisites for this program are typically met with a University certificate in OH&S studies. Contact us to determine if you may begin the diploma program with pre-existing skills in incident causation theory, risk assessment and physical workplace controls.

---

**CLASSES START:** Whenever the time is right for you.

---

**LOCATION:** Online

---

**AFTER GPC:** Work in a wide variety of sectors as a health and safety consultant or officer, as an ergonomic and safety specialist, quality assurance professional or safety inspector. Pursue a related degree or MBA online.

---



## Practical Nursing

Full-time



### **RECEIVE THE TRAINING REQUIRED TO BECOME A LICENSED PRACTICAL NURSE IN SASKATCHEWAN.**

Through a combination of hands-on classroom learning and practicums, you will receive clinical experience in medicine, surgery, pharmacology, acute care, obstetrics, pediatrics, long-term and rehabilitative care, health promotion and illness prevention. You will be highly skilled and well prepared to write your licensure exam upon graduation.

---

**LOCATIONS:** Biggar, Swift Current

---

**AFTER GPC:** Work in acute, rehabilitation, medical centres, extended care or community settings and choose an area of specialization in facilities across Canada. Continue your education and work toward a degree in Nursing.

---



Full-time | Part-time



**START YOUR UNIVERSITY JOURNEY HERE AND ENJOY SMALLER CLASS SIZES AND QUALITY INSTRUCTION.**

You can take your first year (and sometimes more) of almost any university program right here at Great Plains College. Most classes are face-to-face, with less than 35 people per class. You will also maximize your scholarship potential by qualifying for scholarships at both the university you are enrolled at and Great Plains College.

**LOCATION:** Swift Current (face-to-face, live streamed and online)

**AFTER GPC:** Continue and complete your degree at University of Regina or University of Saskatchewan.

Your First Year

AGRICULTURE

Students accepted into the University of Saskatchewan’s College of Agriculture and Bioresources can take their first year of study with concentrations in agricultural biology, agricultural economics, agronomy, animal science, applied plant ecology, crop science, environmental science, food and bioproduct science, horticulture science, and soil science. Students at Great Plains College will benefit from the campus’ proximity to the Swift Current Research Development Centre, a leading agriculture research facility.

ARTS & SCIENCE

The first year provides you with the opportunity to take a variety of courses needed to pursue the degree of your choice. You can also keep your options open and take the time to identify program areas that interest you. Student advisers will work with you to help select classes that meet general degree requirements. That way, when you are ready to choose a major or program you will likely have the prerequisites in place.

EDUCATION

Students accepted into the University of Regina’s Elementary or Middle Years programs can complete their first year at Great Plains College. University of Saskatchewan and Secondary Education students can also take courses toward their program as full-time or part-time students. An adviser will assist you with course selection to fit your Education program.

PRE-NURSING

Students interested in obtaining a Bachelor of Science in Nursing (BSN) from the University of Saskatchewan can take their first year, 30 credit hours, of pre-professional Arts and Science courses at Great Plains College.

SOCIAL WORK

Begin the first year of a University of Regina Social Work degree and gain the skills necessary to counsel individuals and groups, develop and administer programs, and implement problem-solving strategies, often with minority and disadvantaged groups in urban, rural and remote areas. Complete your remaining years online or at the University of Regina.



## Master of Business Administration in Community Economic Development

Part-time



### EARN AN MBA WHILE YOU WORK.

The Master of Business Administration in Community Economic Development from Cape Breton University is offered on a part-time basis at Warman Campus. Blending the disciplines of business and social science with the practice of community economic development, the MBA in CED is a unique program designed for learners who aspire to be leaders in the public or voluntary sectors and in community-minded businesses.

**LOCATION:** Warman

**AFTER GPC:** The two-year program takes place on alternate weekends. As such, learners can earn their MBA while maintaining employment.



# Be skilled.

## Thrive in small classes with quality one-on-one learning opportunities.

# Be close to home.

## Programs by Location

### Biggar

Adult Basic Education, Continuing Care Assistant, Electrician, Personal and Professional Development, Practical Nursing, Safety Training

### Rosetown

English Language Training, Personal and Professional Development, Safety Training

### Kindersley

Adult Basic Education, Administrative Assistant, Continuing Care Assistant, English Language Training, Personal and Professional Development, Power Engineering (Third Class), Safety Training

### Swift Current

Adult Basic Education, Administrative Assistant, Business (certificate and diplomas in Accountancy, Human Resources, Management), Continuing Care Assistant, Early Childhood Education, Electrician, English Language Training, Personal and Professional Development, Power Engineering (Fourth and Third Class), Practical Nursing, Primary Care Paramedic, Safety Training, University, Welding

### Maple Creek

Adult Basic Education, English Language Training, Personal and Professional Development, Safety Training

### Warman

Adult Basic Education (classes held in Martensville), Administrative Assistant, Business (certificate and diploma in Management), Early Childhood Education, English Language Training, Heavy Equipment Operator, Master of Business Administration in Community Economic Development, Personal and Professional Development, Safety Training, Youth Care Worker

### Online

Certificate in Health, Safety & Environmental Processes, Diploma in Safety, Health and Environmental Management, English Language Training, Personal and Professional Development, Safety Training, University



# English Language Training



**These classes are for individuals whose first language is not English. The classes will help improve English language skills and increase community connections.**

## What you will learn

You will learn about living in Canada and develop English language skills in:

- Listening
- Speaking
- Reading
- Writing

## How you will learn

English Language Training is available in-class and online.

## Evening classes

The part-time evening classes will help you learn English and have fun too. You can meet other newcomers in the class.

## Full-time classes

The full-time classes are offered during the day at our Swift Current Campus.

## Blended learning classes

These classes are available in Swift Current and Warman for learners with an English language level of CLB4 or higher. One class each week will be face-to-face, and the other will be online.

## Online learning

There are minimum English language levels that online learners must meet.

## IELTS Testing

Great Plains College Swift Current Campus is an International Language Testing System (IELTS) testing centre. We offer help to prepare for writing the IELTS exam on a demand basis. Visit [greatplainscollege.ca](http://greatplainscollege.ca) for upcoming exam dates.

**For more information and program locations, contact:**

**Bula Ghosh:** English Language Training Coordinator

**Swift Current:** (306) 778-5477 • Toll-free: 1 (866) 296-2472

**Email:** [bulag@greatplainscollege.ca](mailto:bulag@greatplainscollege.ca) | [greatplainscollege.ca/english-language-training](http://greatplainscollege.ca/english-language-training)



## International

Quality educational opportunities are available for international students in our Administrative Assistant, Continuing Care Assistant and Business programs.

Visit us at [greatplainscollege.ca/international](http://greatplainscollege.ca/international) for complete program details.

# Adult Basic Education

Take high school-level courses in an adult-focused learning environment while building your skills for employment.

**As a student, you help to build your own learning and career plan based on your goals. The staff and instructors use your plan to support you through all the challenges and opportunities of going to school as an adult.**

**Classes start:** Start dates will vary for each location. Please check our website at [greatplainscollege.ca/abe](http://greatplainscollege.ca/abe) or contact a student adviser for details.

**Locations:** Biggar, Kindersley, Maple Creek, Martensville, Swift Current, Whitecap Dakota First Nation



## Essential Skills



### Essential Skills for Employment



#### DO YOU WANT TO GET A JOB OR ENTER A NEW FIELD OF WORK? WE CAN HELP YOU DEVELOP THE SKILLS, ABILITIES AND ATTITUDES NECESSARY TO MAKE THAT HAPPEN.

As an Essential Skills student, you will improve your ability to work with numbers, communicate, read and write. You will be given opportunities to gain the skills that make you ready for the workplace of today through job shadowing and practicum opportunities.

---

**CLASSES START:** Varies by location. Visit [greatplainscollege.ca/abe](http://greatplainscollege.ca/abe) for dates.

---

**LOCATIONS:** Maple Creek, Martensville, Swift Current, Whitecap Dakota First Nation

---

**AFTER GPC:** Students may use their new skills and work experience to enter the workforce or continue their education in the Pre-12 or Grade 12 program.

---



## Essential Skills - Early Childhood Education



### DO YOU ENJOY WORKING WITH CHILDREN AND ARE LOOKING FOR A NEW CAREER PATH WITH MANY EMPLOYMENT OPPORTUNITIES?

Aimed at those who do not have a recognized Canadian Grade 12 and a minimum overall Canadian Language Benchmark of level 5, this program will help you to develop the language and employment skills required for the Canadian daycare setting. You will also be immersed in government-approved credit programming and workplace experience to build your resume for a career in childcare.

---

**CLASSES START:** September-April

---

**LOCATION:** Martensville

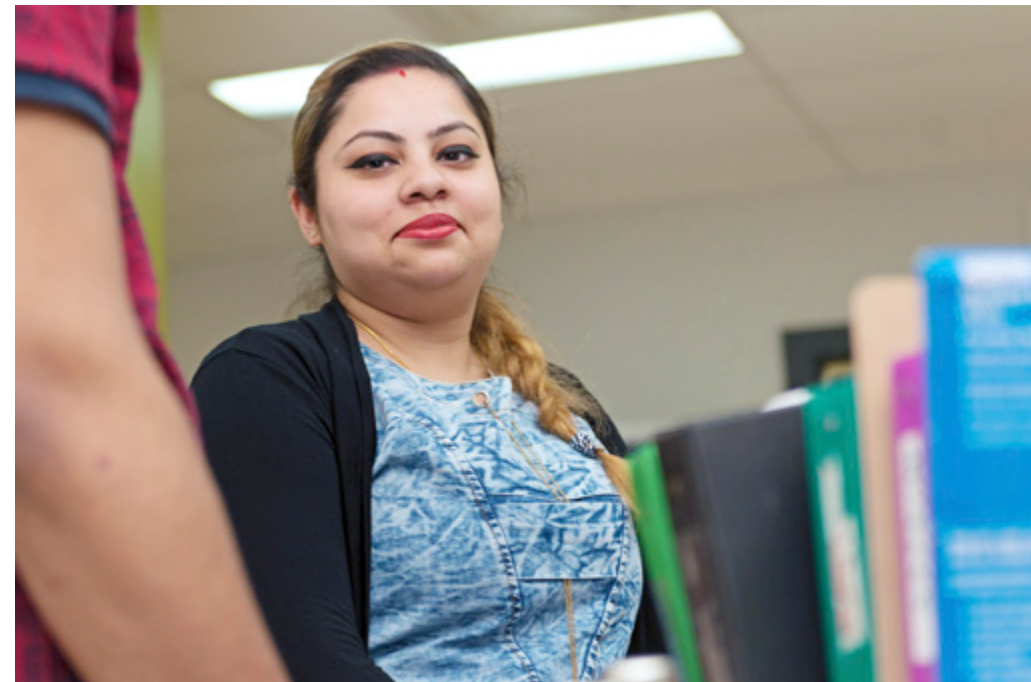
---

**AFTER GPC:** You'll be prepared to enter a career in childcare or daycare settings with various industry certifications and an Early Childhood Education Level 1 certificate.

---



## Essential Skills for Newcomers



### ARE YOU NEW TO CANADA AND NEED HELP GETTING A JOB THAT BRINGS PERSONAL SATISFACTION AND USES YOUR SKILL SET?

Aimed at those who do not have a recognized Canadian Grade 12 and a minimum overall Canadian Language Benchmark of level 4, this program will help you learn about the Canadian work environment and improve your language and employment skills. You will also benefit from on-the-job experience, mentorship, coaching and connecting with employers.

---

**CLASSES START:** September-April

---

**LOCATION:** Swift Current

---

**AFTER GPC:** You'll be fully prepared to enter into a job in the Canadian workforce or continue onto further career training.

---



## Adult 10



### SOMETIMES LIFE'S UPS AND DOWNS GET IN THE WAY OF FINISHING SCHOOL. THAT IS WHY WE WILL MEET YOU WHEREVER YOU ARE.

Our Adult 10 programs offer a wide variety of credit courses in areas such as communications, mathematics, science and social studies. The Adult 10 program spends a lot of time giving you new ways to improve your life outside of school. Most importantly, we include activities and certificates that improve your chances of getting and keeping a job. If you feel ready, you will have a chance to write your General Education Development (GED®) test.

**CLASSES START:** Varies by location. Visit [greatplainscollege.ca/abe](http://greatplainscollege.ca/abe) for dates.

**LOCATIONS:** Biggar, Maple Creek, Kindersley, Martensville, Swift Current, Whitecap Dakota First Nation

**AFTER GPC:** Graduating from this program means you might move into the Grade 12 program, apply to enter some post-secondary courses or get a job; the choice is yours.



## Grade 12 Program



### MANY EMPLOYERS AND POST-SECONDARY PROGRAMS REQUIRE THE MINIMUM STANDING OF A COMPLETE HIGH SCHOOL EDUCATION; LET US HELP YOU GET THERE TODAY.

We offer complete credits for a Grade 12 standing recognized by the Ministry of Education. Core subject areas include English, Canadian studies, mathematics and science and 30-level electives to finish the Grade 12 program. No matter how long you've been out of a school setting, our instructors are here to help you transition and prepare for all the Grade 12 programming entails.

**CLASSES START:** September-May

**LOCATIONS:** Biggar, Kindersley, Maple Creek, Martensville, Swift Current, Whitecap Dakota First Nation

**AFTER GPC:** Graduating from this program means you might continue onto further post-secondary education or be prepared to get a better job.



Upgrading



**DID YOU LEAVE HIGH SCHOOL EARLY? DO YOU NEED A FEW MORE CREDITS OR HIGHER MARKS IN SOME SUBJECTS? DID YOU ATTEND SCHOOL IN A COUNTRY WITH DIFFERENT REQUIREMENTS?**

Upgrading might be right for you. To enter into many post-secondary programs, you will need specific high school courses and grades, which we offer in our Grade 12 classrooms.

CLASSES START:	September-May
LOCATIONS:	Biggar, Kindersley, Maple Creek, Martensville, Swift Current, Whitecap Dakota First Nation
AFTER GPC:	Use your improved grades to take the next step in your post-secondary education journey.



Adult Basic Education Persistence Awards

These financial awards recognize Adult Basic Education students who’ve demonstrated perseverance and determination in overcoming barriers to continue with their formal education.

Visit [greatplainscollege.ca/scholarships](http://greatplainscollege.ca/scholarships) for full details and application deadlines.

Funding

If you are a full-time student you may qualify for Provincial Training Allowance assistance.

For detailed program information or funding options at each location, please contact a student adviser. These are secondary programs and are not eligible for student loans or Great Plains College Entrance Scholarships.

# Be safe.

We are your  
**trusted** partner  
in safety training.

We work closely with businesses to deliver in-person and online training courses and certifications that are required to maintain occupational health and safety compliance, making your employees safer, more productive and knowledgeable.

## Course options include, but are not limited to:

- ATV/UTV Safety
- Chainsaw Safety Awareness
- Class 1 Truck Driver Mandatory Entry Level Training (MELT), theory only
- Commercial Pesticide Applicator
- Confined Space Awareness, Entry, Rescue & Rescue Technician
- Defensive Driving & In-Car Driving Assessments
- Detection & Control of Flammable Substances
- Fall Protection for Rig Work – Energy Safety Canada
- Workplace Fall Protection
- Fall Rescue for Rig Work – Energy Safety Canada
- Fire Extinguisher Levels I & II
- Fireman's Prep – For Building Maintenance
- First Aid/CPR – Red Cross
- FIT Testing for SCBA/SABA and N95 particle masks
- Global Ground Disturbance Levels 1 & 2
- H2S Alive – Energy Safety Canada
- Overhead Crane Operator
- Powered Mobile Equipment Operator (Forklift, Scissorlift and Skidsteer)
- Special Oilfield Boiler Operator

A full course calendar is available at:  
[greatplainscollege.ca/safety-training](https://greatplainscollege.ca/safety-training) or you can contact us directly to arrange specific, customized training.



# Scholarships & Awards

**You are automatically considered for an Entrance Scholarship or Early Entrance Award when you apply to a full-time student loan-eligible program before the scholarship deadline.**

**You must pay your application fee and submit your most current transcripts for your application to be considered.**

## Entrance Scholarships \$500 - \$5,000

Grade-based scholarships to a maximum total of \$5,000 are available for students in the Administrative Assistant, Business (certificate and Human Resources or Management diploma), Continuing Care Assistant, Electrician, Power Engineering, University, Welding and Youth Care Worker programs.

Entrance Scholarships of \$1,000 are available to students in the Practical Nursing program.

Entrance Scholarships of \$500 are available for the Certificate in Health, Safety and Environmental Processes and Diploma in Safety, Health and Environmental Management programs.

## 2020-21 Grade-based scholarship levels

95%+	\$5,000
90-94%	\$3,000
85-89%	\$2,000
80-84%	\$1,500
75-79%	\$1,000
74% or lower	\$500

**Note:** Your Entrance Scholarship grade average is calculated based on marks from 30-level Canadian studies, English classes and the highest marks from 20 or 30-level math and science classes. Some exceptions may apply.

## Grade 11 Early Entrance Award | \$1,000

**If you are in Grade 11 with at least a 70 per cent grade average—based on four core classes—and apply to any fulltime student loan-eligible program before June 30, you are eligible for an additional Early Entrance Award of \$1,000.**

## Athletic Scholarships

Athletic Scholarships may be available to qualified student-athletes.

For more information, email [sundogs@greatplainscollege.ca](mailto:sundogs@greatplainscollege.ca) or call (306) 773-1531.

## Deadlines

**October 31** | Entrance Scholarship – late fall and winter start dates

**February 28** | Entrance Scholarship – spring start dates

**April 30** | Entrance Scholarship – September start dates

**June 30** | Early Entrance Award (Grade 11)



# GREAT PLAINS COLLEGE **SUNDOGS**

## PERFORM WITH STRENGTH AND DETERMINATION.

SunDogs athletes are dedicated to success and teamwork, on and off the court. They are focused individuals who have the opportunity to grow together as a team and contribute to the communities which support them.



Visit [greatplainscollege.ca/sundogs-athletics](https://greatplainscollege.ca/sundogs-athletics) for upcoming scouting camps, events, try-out dates and SunDogs' schedules.

# Be a SunDog.

Phone: (306) 773-1531 | Toll-free: 1 (866) 296-2472  
Email: [sundogs@greatplainscollege.ca](mailto:sundogs@greatplainscollege.ca)

# Be at GPC.

## How do I apply?

Fill out and submit an electronic or paper application form, which is available online at [greatplainscollege.ca/apply](https://greatplainscollege.ca/apply), or stop in at any Great Plains College location.

Remember to pay your application fee and submit your most current official transcripts for your application to be considered.

## When should I apply?

For most programs, applications are accepted year-round on a first-come-first-serve basis. Apply early to secure your seat. Please note the Practical Nursing programs have application deadlines.

Don't forget to apply by April 30 (for September program start dates), October 31 (for late fall and winter program start dates) and February 28 (for spring program start dates) to be assessed for an Entrance Scholarship. Apply by June 30 of your Grade 11 year to be considered for an Early Entrance Award.

## Ok, I've applied. Now what?

A student adviser will contact you shortly to confirm that we have received your application. You may receive a conditional acceptance letter outlining program, tuition and scholarship details. If you are conditionally accepted, you will be asked to pay a tuition deposit within 30 days to secure your seat.

If you apply to a program that is already full, or have not met your program's prerequisites, a student adviser will contact you to discuss your options.

## Still have questions?

Our student advisers can guide you through everything from the application process and prerequisites to scholarships, student loans and course loads.

For more information on any of our programs or services, to book a tour or to meet a student adviser, visit [greatplainscollege.ca](https://greatplainscollege.ca), email [info@greatplainscollege.ca](mailto:info@greatplainscollege.ca) or call us toll-free at 1 (866) 296-2472.

# Personal & Professional Development

Great Plains College also offers a number of personal and professional development opportunities throughout the year, which include:

- Basic Bookkeeping
- Computer training
- Crucial Conversations
- Mental Health First Aid
- Pet First Aid
- Welding Clinics: Beginner and Advanced Levels

Visit [greatplainscollege.ca/ppd](https://greatplainscollege.ca/ppd) to see a list of upcoming courses.

Kindersley: **1 (888) 382-7972**

Swift Current: **1 (866) 296-2472**

Email: [info@greatplainscollege.ca](mailto:info@greatplainscollege.ca)

## Your mental health is a priority

### Mental health affects your performance, your relationships and every aspect of your life.

As a student at Great Plains College, you are provided access to mental health information and supports through the myWellness program. This includes online counselling, tools for stress reduction, therapy, mental health assessments and more. It's free and anonymous!

Post-Secondary Admissions Chart\*

PROGRAM	FULL-TIME/ PART-TIME	LENGTH	LOCATION	DATES	ACADEMIC ADMISSION REQUIREMENTS **	APPROXIMATE TUITION	CREDENTIAL	CREDIT GRANTING INSTITUTE	# OF SEATS AVAILABLE
Administrative Assistant	FT & PT	9 months	Kindersley, Swift Current, Warman	Begin in Sep, Nov, Jan or Mar	Gr. 12 with English Language Arts A30 & B30 and any 20-level math	\$5,862	Certificate	Assiniboine Community College	Varies
Business	FT & PT	8 months	Swift Current, Warman	Sep - Apr	Gr. 12	\$4,798	Certificate	Saskatchewan Polytechnic	24 Swift Current/14 Warman
Business Diploma in Accountancy, Human Resources or Management	FT & PT	2 years	Swift Current , Warman	Sep-Apr	Grade 12 or successful completion of three courses, of at least 3 credit units each, from the Business certificate program.	\$9,850	Diploma	Saskatchewan Polytechnic	24 Swift Current/14 Warman
Certificate in Health, Safety and Environmental Processes	FT & PT	Varies	online	Continuous intake	Access to a computer with an Internet connection and a minimum of three hours study time per week.	\$7,020 (FT)	Certificate***	U of Fredericton	Unlimited
Continuing Care Assistant	FT & PT	Varies	Biggar, Kindersley, Swift Current	Visit <a href="http://greatplainscollege.ca">greatplainscollege.ca</a>	Gr. 12/GED®	Varies per course	Certificate	Saskatchewan Polytechnic	24
Diploma in Safety, Health and Environmental Management	FT & PT	Varies	online	Continuous intake	Certificate in Occupational Health and Safety and access to a high speed Internet connection, headset and microphone.	\$5,040 (FT)	Diploma***	U of Fredericton	Unlimited
Early Childhood Education	PT	Varies	Swift Current, Warman	Visit <a href="http://greatplainscollege.ca">greatplainscollege.ca</a>	Gr. 12 with English Language Arts A30 & B30	Varies per course	Certificate/Diploma	Saskatchewan Polytechnic	24
Electrician	FT	17 weeks	Biggar, Swift Current	Aug-Dec & Jan-May (Swift Current)	Gr. 11 with any 20-level Math	\$3,480	Certificate	Saskatchewan Polytechnic	10 Biggar/12 Swift Current
Heavy Equipment Operator	FT	6 weeks	Warman	Visit <a href="http://greatplainscollege.ca">greatplainscollege.ca</a>	Current/valid Class 5 Driver's License. 17+ years of age, be physically fit and have full range of body motion.Standard First Aid and CPR C certification is recommended.	\$10,000	Powered Mobile Equipment Certification		8
Liberal Arts	FT & PT	Varies	Swift Current	Sep-Apr	Visit <a href="http://greatplainscollege.ca">greatplainscollege.ca</a>	Set by U of R	Certificate	U of Regina	Varies
Master of Business Administration in Community Economic Development	PT	2 years	Warman	Jan 2020	Visit <a href="http://cbu.ca/academics/business/degrees-programs">cbu.ca/academics/business/degrees-programs</a>	Set by CBU	MBA	Cape Breton U - Shannon School of Business	20
Power Engineering - Fourth Class	FT	8 months	Swift Current	Sep-May	Gr. 12 with Foundations of Math 30 or Pre-Calculus 30 and a minimum overall average of 65%	\$5,919	Certificate	Saskatchewan Polytechnic	12
Power Engineering - Third Class	FT	4 months	Kindersley	Sep-Dec	Fourth Class Power Engineering License or Certificate	\$2,756	Certificate	SAIT	18
Power Engineering - Third Class	FT	6 months	Swift Current	May-Dec	Fourth Class Power Engineering License or Technician Certificate	\$4,819	Certificate	Saskatchewan Polytechnic	12
Practical Nursing	FT	2 years	Biggar, Swift Current	Next start date, Feb. 2021 (Biggar), Sep-Jun (Swift Current)	Gr.12 with a minimum overall average of 65% in: English Language Arts A30 & B30; Foundations of Math 30, Workplace and Apprenticeship Math, or Pre-calculus 30; and Biology 30, Chemistry 30, or Physics 30; and Social Studies 30, History 30, or Native Studies 30. High demand intake. Accepted students will be required to submit a criminal record and vulnerable sectors check, First Aid/CPR HCP, TLR , 2015 WHMIS and immunization records.	\$13,280	Diploma	Saskatchewan Polytechnic	14
Primary Care Paramedic	PT	1.5 years	Swift Current	Sep-Dec	Grade 12 with a minimum overall average of 60% in: English Language Arts A30, English Language Arts B30, one of Biology 30 or Chemistry 30, and one of Workplace and Apprenticeship Math 30 or Foundations of Math 30 or Pre-Calculus 30. Accepted students will be required to submit a criminal record and vulnerable sectors check, First Aid/CPR 'C' AED, TLR, N95 respirator mask testing, 2015 WHMIS and immunization records.	\$8,670	Certificate	Saskatchewan Polytechnic	12
University	FT & PT	Varies	Swift Current	Varies	Visit <a href="http://greatplainscollege.ca">greatplainscollege.ca</a>	Set by universities	University Credit	U of Regina, U of Saskatchewan	Varies
Welding	FT	8 months	Swift Current	Sep-May	Gr. 10	\$6,519	Certificate	Saskatchewan Polytechnic	12
Youth Care Worker	FT	8 months	Warman	Sep-May	Gr. 12	\$5,666	Certificate	Saskatchewan Polytechnic	22

Additional Programs

PROGRAM	FULL-TIME/ PART-TIME	LOCATION
English Language Training	FT&PT	Biggar, Kindersley, Maple Creek, Rosetown, Swift Current, Warman, other locations as needed
Grade 12/Upgrading	FT & PT	Biggar, Kindersley, Maple Creek, Martensville, Swift Current, Whitecap Dakota First Nation
Pre-12 /Essential Skills	FT & PT	Biggar, Kindersley, Maple Creek, Martensville, Swift Current, Whitecap Dakota First Nation
Personal & Professional Development and Safety Training	N/A	Biggar, Kindersley, Maple Creek, Rosetown, Swift Current, Warman, customized training locations

\* Accuracy: Great Plains College makes every effort to ensure that the information in this guide is accurate and complete at the time of printing. However, by the time you apply, the information provided here may change. Please visit our website or contact a student adviser.

\*\* English Language Requirement: Most post-secondary programs have an English language requirement. Visit the program description at: [greatplainscollege.ca/programs-courses](http://greatplainscollege.ca/programs-courses) for complete information.

\*\*\* Includes Foundation & Advanced/Applied levels.

SPECIAL ADMISSIONS: If you do not meet the entrance requirements, special admissions may be an option. Contact a Great Plains College student adviser to explore your options.

TUITION FEES: Tuition fees are projected. They do not include the application fee. They are for Canadian residents and are subject to change.

INTERNATIONAL STUDENTS: International students are encouraged to contact a student adviser and visit [greatplainscollege.ca/international](http://greatplainscollege.ca/international) for further information.



# Be social.

---

 [facebook.com/greatplainscollege](https://facebook.com/greatplainscollege)

---

 [@GPCollege](https://twitter.com/GPCollege)

---

 [youtube.com/greatplainscollege](https://youtube.com/greatplainscollege)

---



### **BIGGAR PROGRAM CENTRE**

Box 700, 701 Dominion Street, Biggar, SK S0K 0M0  
Phone: (306) 948-3363

### **KINDERSLEY CAMPUS**

Box 488, 514 Main Street, Kindersley, SK S0L 1S0  
Phone: (306) 463-6431, Fax: (306) 463-1161

### **MAPLE CREEK PROGRAM CENTRE**

Box 1738, 20 Pacific Avenue, Maple Creek, SK S0N 1N0  
Phone: (306) 662-3829

### **ROSETOWN PROGRAM CENTRE**

Box 610, 1005 Main Street, Rosetown, SK S0L 2V0  
Phone: (306) 882-4236

### **SWIFT CURRENT CAMPUS**

129 2nd Avenue NE, Swift Current, SK S9H 2C6  
Phone: (306) 773-1531, Fax: (306) 773-2384

### **WARMAN CAMPUS**

Box 1001, 201 Central Street, Warman, SK S0K 4S0  
Phone: (306) 242-5377, Fax: (306) 242-8662

1 (866) 296-2472 | [greatplainscollege.ca](http://greatplainscollege.ca)

